

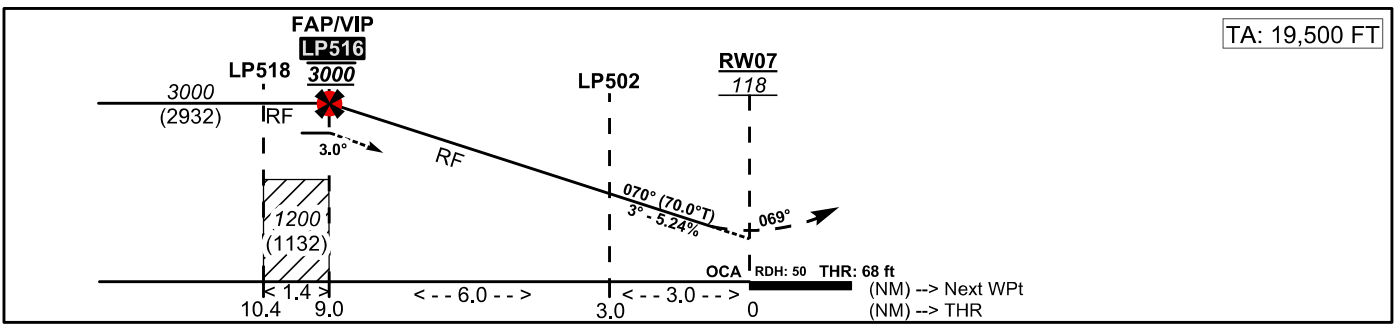
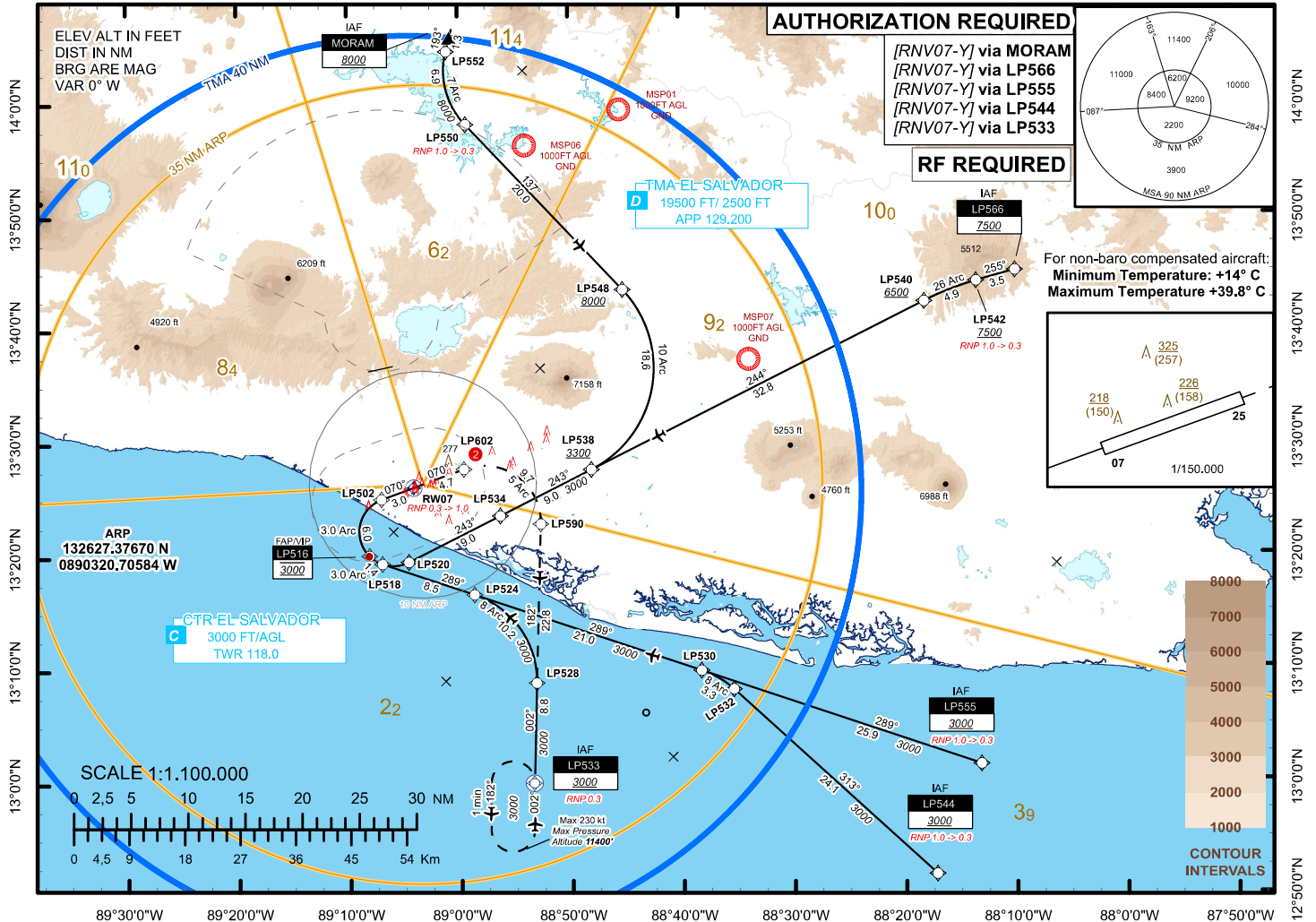
INSTRUMENT
APPROACH
CHART

AERODROME ELEV 101 ft
HEIGHTS RELATED TO
THR RWY 07 ELEV 68 ft

ATIS 127.600
APP 129.200
TWR 118.000

EL SALVADOR / EL SALVADOR INTL
SAN OSCAR ARNULFO ROMERO Y GALDAMEZ
RNP Y RWY 07 (AR)

89°30'0"W 89°20'0"W 89°10'0"W 89°0'0"W 88°50'0"W 88°40'0"W 88°30'0"W 88°20'0"W 88°10'0"W 88°0'0"W 87°50'0"W



CAT	M.A. Climb Gradient: 2.5% 152 FT/NM				MISSED APPROACH			
	RNP AR FINAL 0.3				1. Climb to 3000 via the RNAV (RNP) missed approach track to LP533. 2. At LP533 hold or start a new approach via LP533, expect ATC instructions. 3. RNP 0.3 is required until LP602.			
	MA RNP 1.0		MA RNP 0.3 ②		CAT	Ceiling	Visibility	ALS OUT
	OCA (H)	DA (H)	OCA (H)	DA (H)				Ceiling - Visibility
A	369' (301')	370' (302')	348' (280')	350' (282')	A	300'	800m	300' - 1600m
B	391' (323')	400' (332')	360' (292')	360' (292')	B	300'	800m	300' - 1600m
C	409' (341')	410' (342')	368' (300')	370' (302')	C	300'	800m	300' - 1600m
D	428' (360')	430' (362')	379' (311')	380' (312')	D	300'	1600m	300' - 1600m